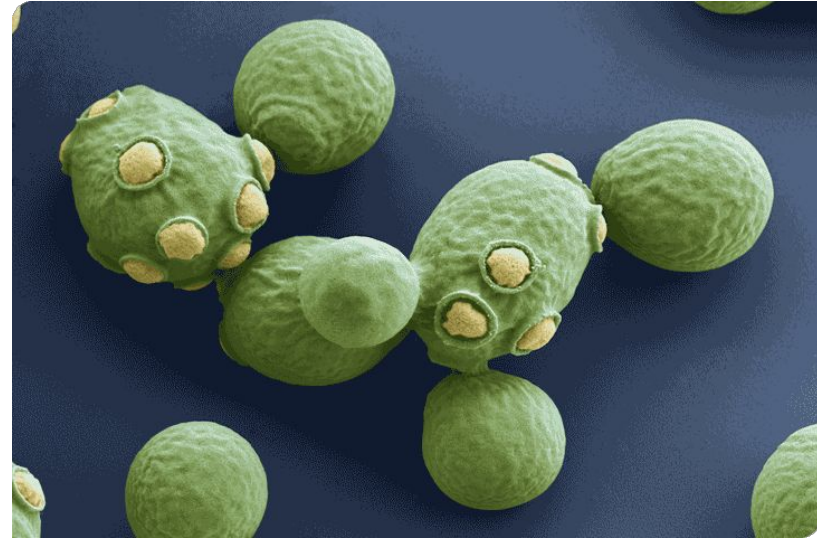
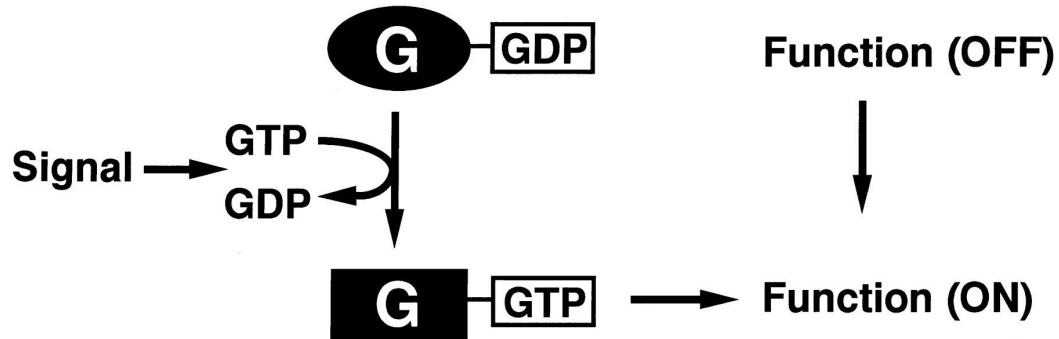


HHMI PRESENTATION 3

Rochan Ramesh & Kenny Goodrich

BACKGROUND

- Ras-GTP conversion
- Stress response
- Deletion of IRA2



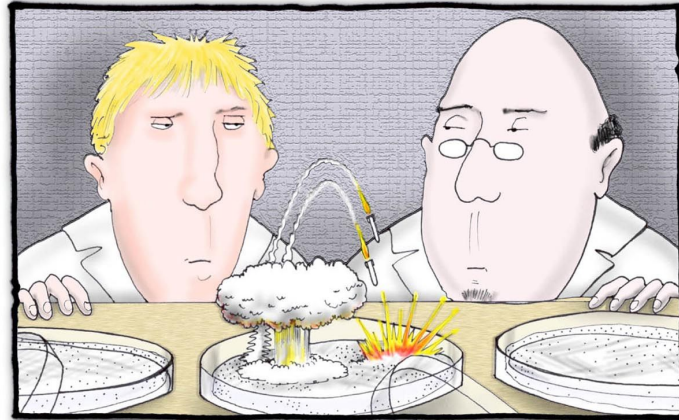
HYPOTHESIS

- Removing IRA2 causes less efficient stress response than wild type.

Y

Yeast

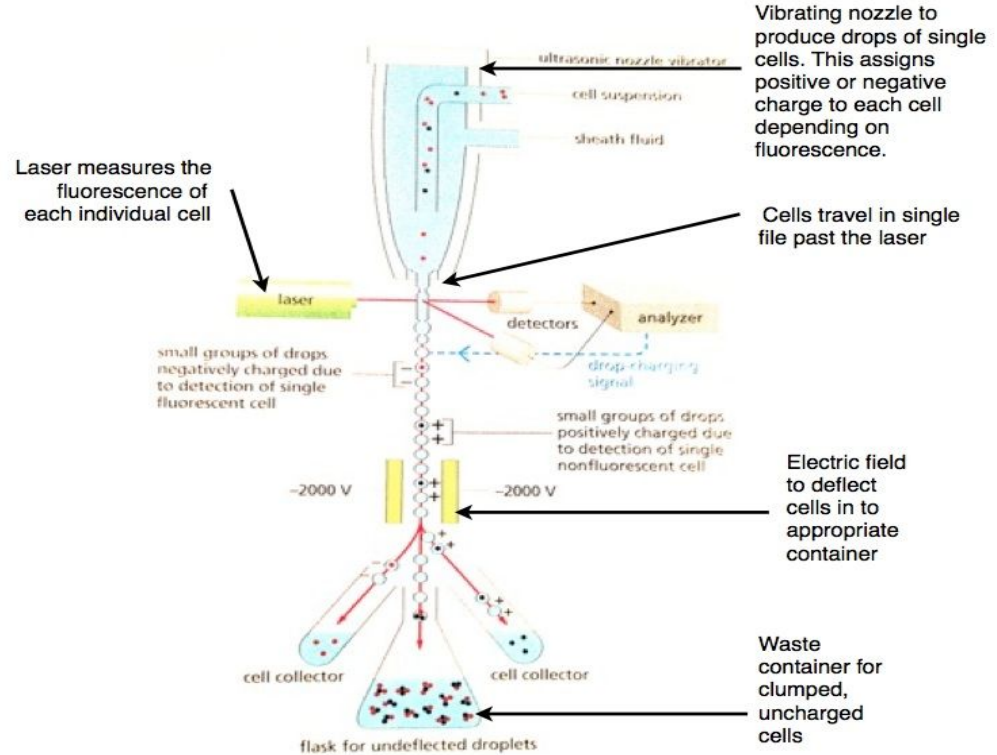
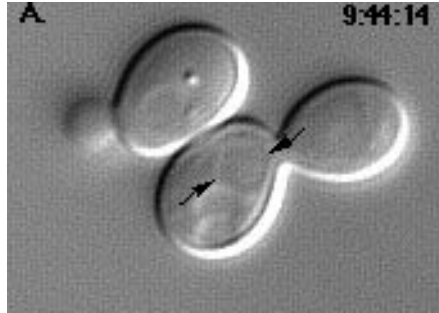
Gregarious single-celled organism whose first evolutionary priority was to develop the capacity to synthesize alcohol. Usually well behaved, but can become rowdy in groups.

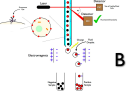


*Once again, war breaks out
in the middle yeast.*

EXPERIMENTAL DESIGN INTRODUCTION

- Alter pH and Temperature
- Control
- Medium(Temperature, pH)
- Tools





FACS (FLUORESCENCE ACTIVATED CELL SORTING)

- Flow Cytometry
- Cell Samples
- Average diameter
- Live and Dead

